



Resin scale model. This is not a toy. Kit is not recommended for children under 14 years of age.

The kit contains resin parts and can only be used by experienced modelers. The kit needs assembly and painting and comes in separate pieces.

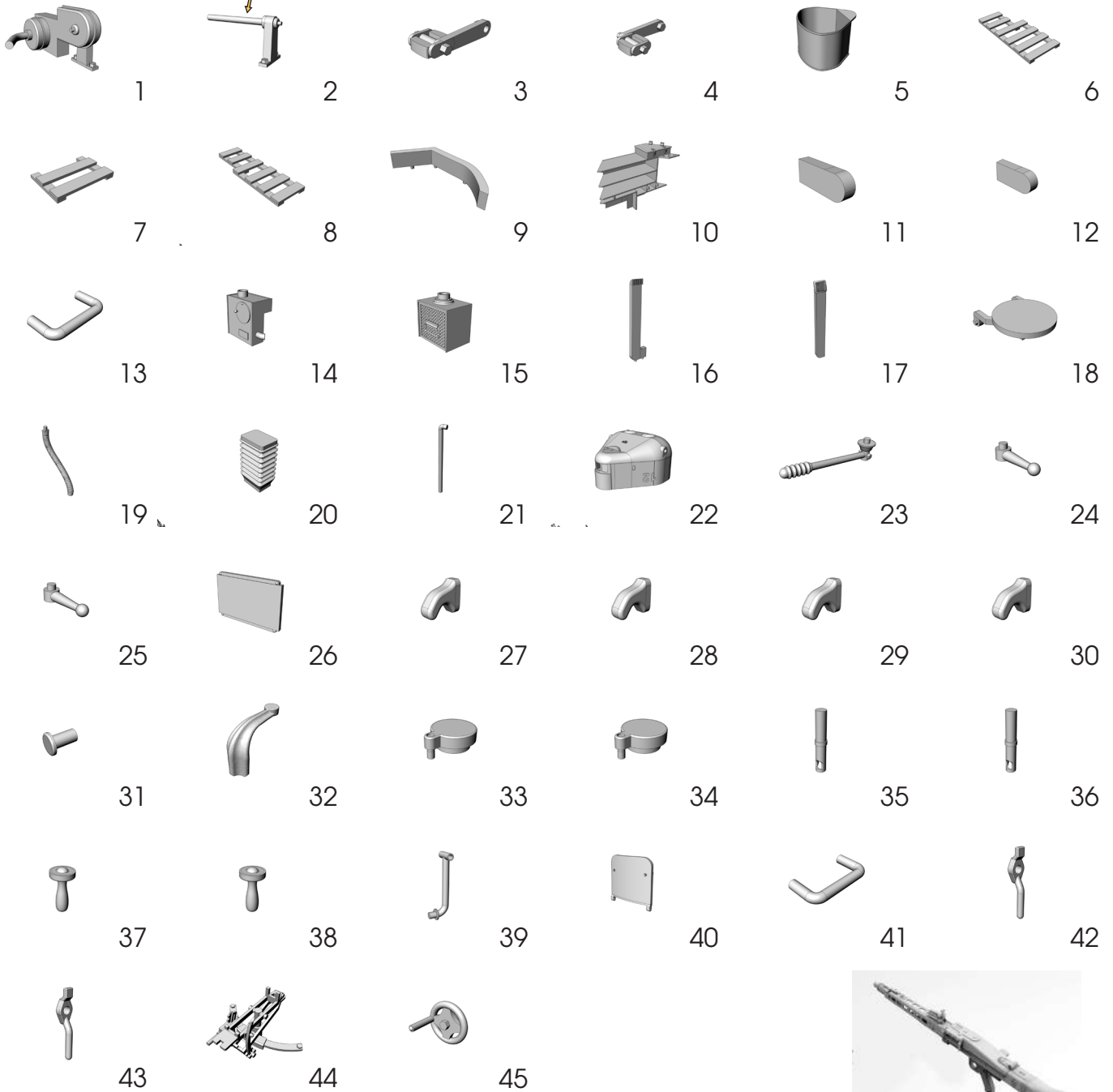
Applying tools and glue suitable for mounting resin parts.

Epoxy or cyanoacrylate is recommended. Working in ventilated spaces.

Beware the kit contains very small pieces that could be swallowed by children.

Part list (tot. 45 pcs)

Plastic rod 11mm X Ø1mm



Decals



For optimum mounting and accurate cutting of supports we recommend prod. HDMU001, our steel cut tweezer



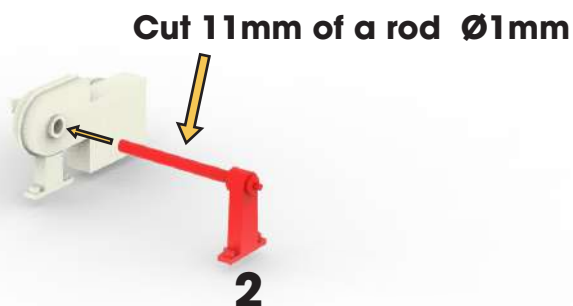
BONUS!

Step by step

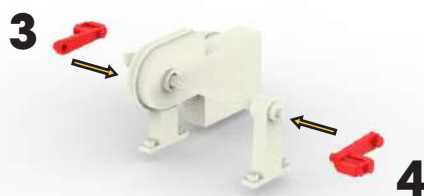
Step 1



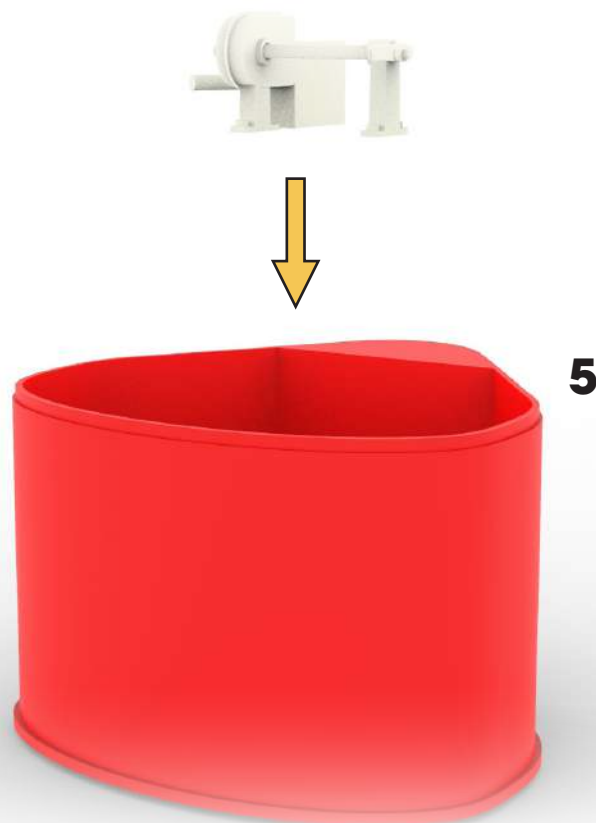
Step 2



Step 3

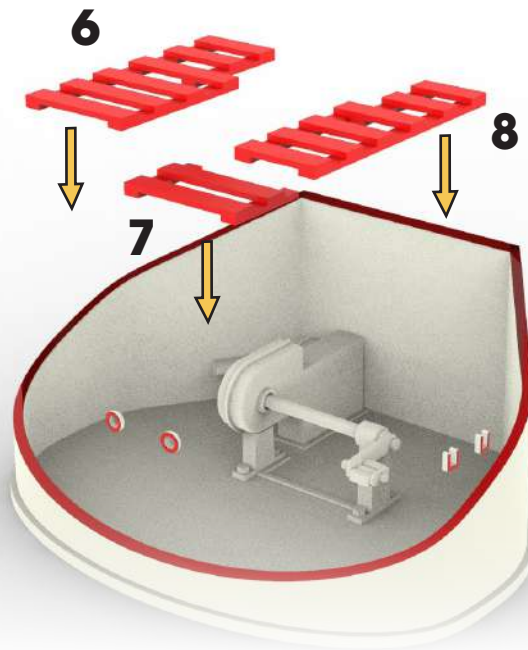


Step 4



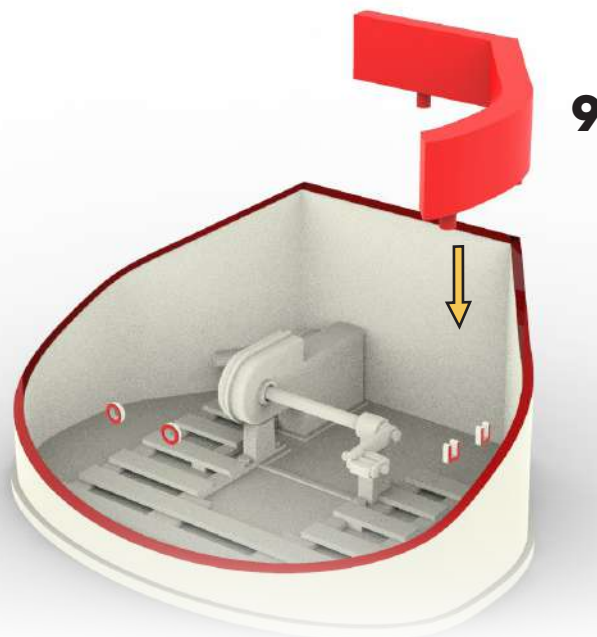
Glue motor inside lower hull

Step 5



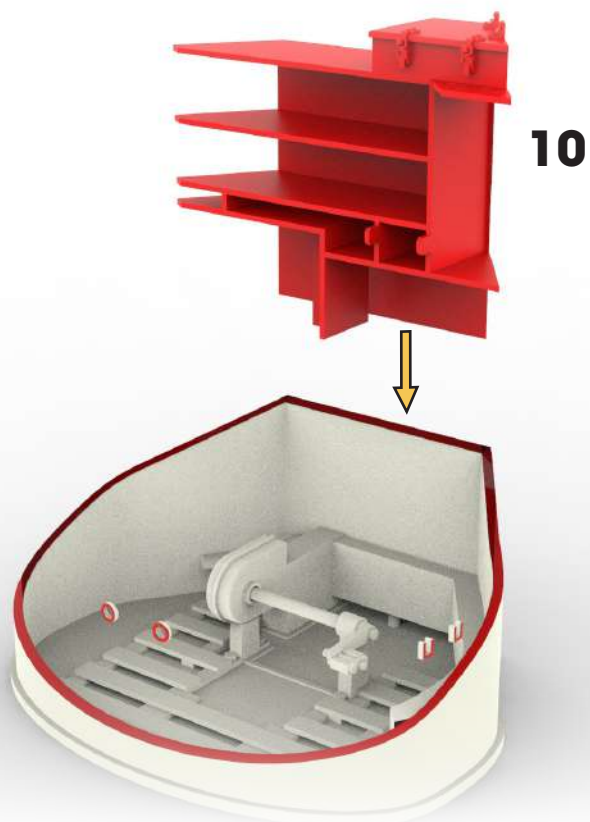
Glue right, central and left wooden platform inside lower hull

Step 6



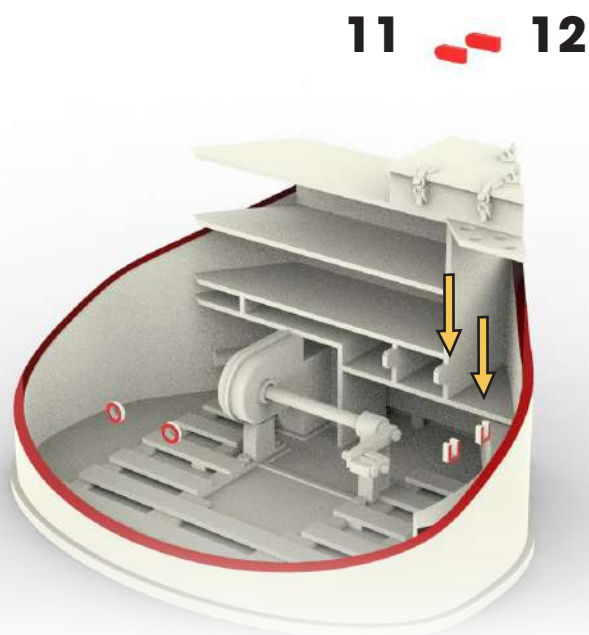
Glue low channel inside lower hull

Step 7



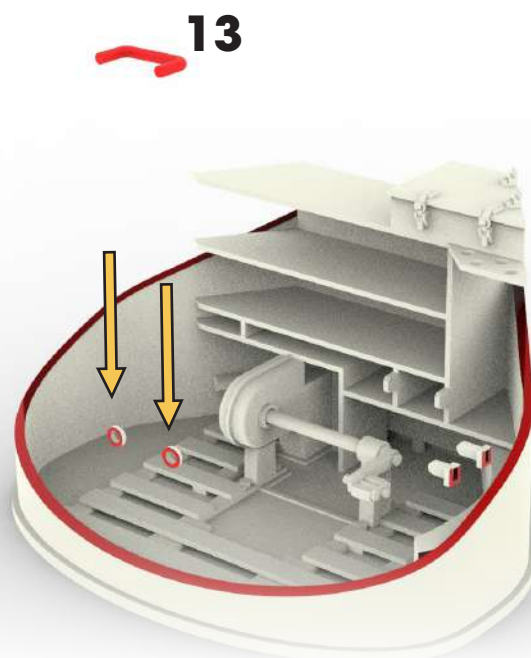
Glue ammo box inside lower hull

Step 8



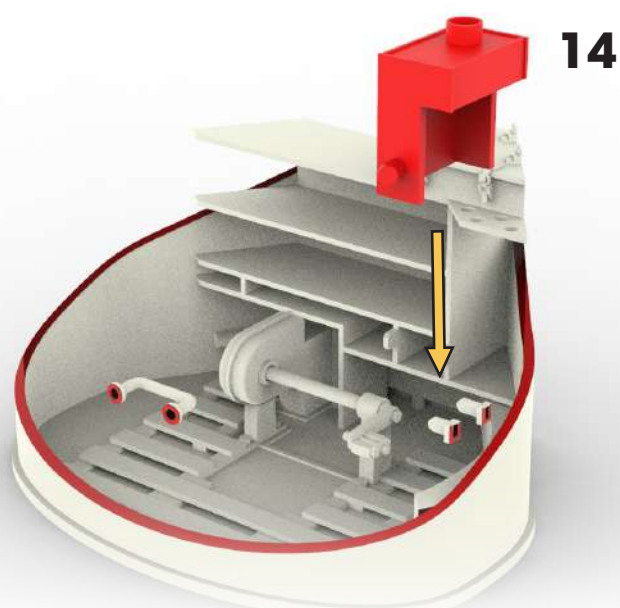
Find the two insert then glue both seat supports

Step 9



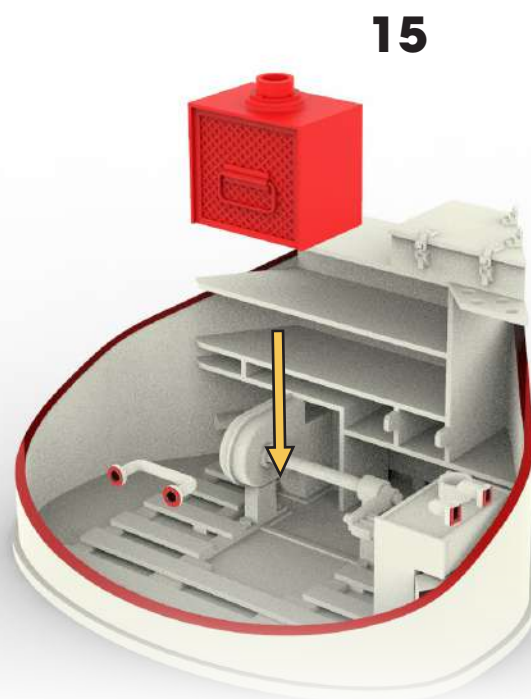
Find the two insert then glue the step

Step 10



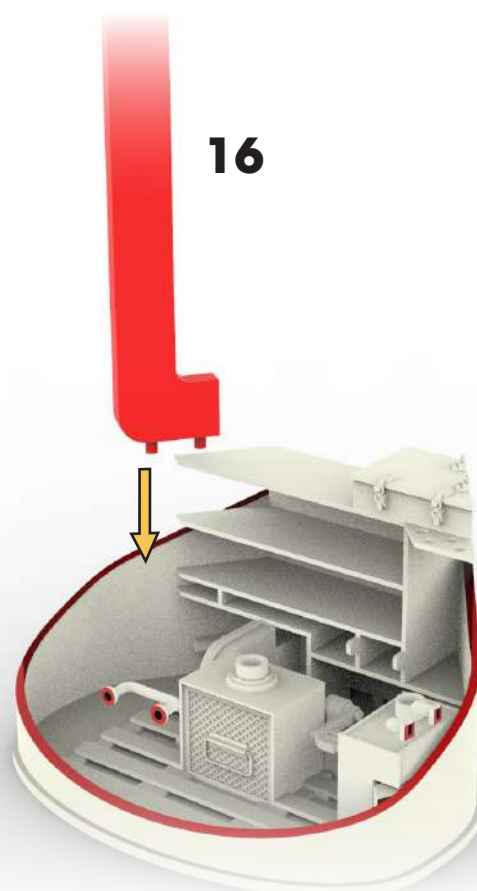
Glue right filter inside lower hull

Step 11



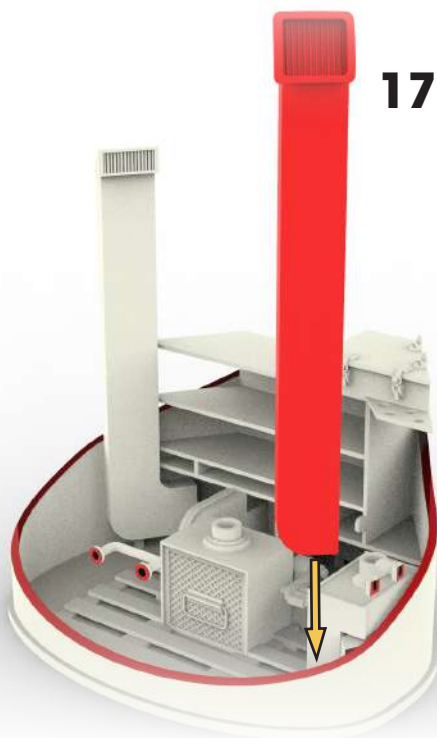
Glue rectangular filter inside lower hull

Step 12



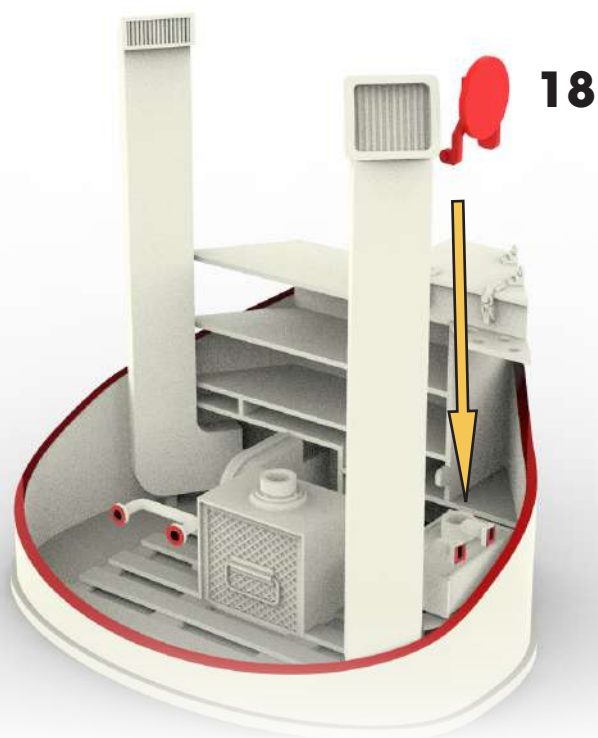
Glue left canne inside lower hull

Step 13



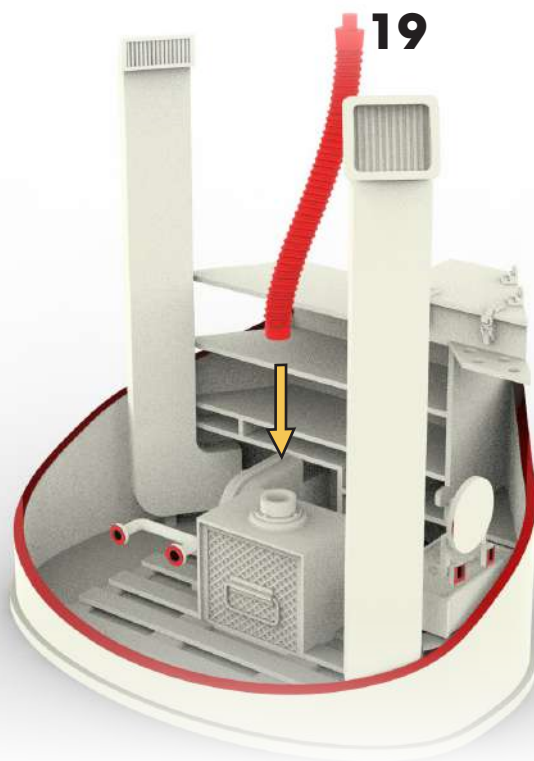
Glue right canne inside lower hull

Step 14



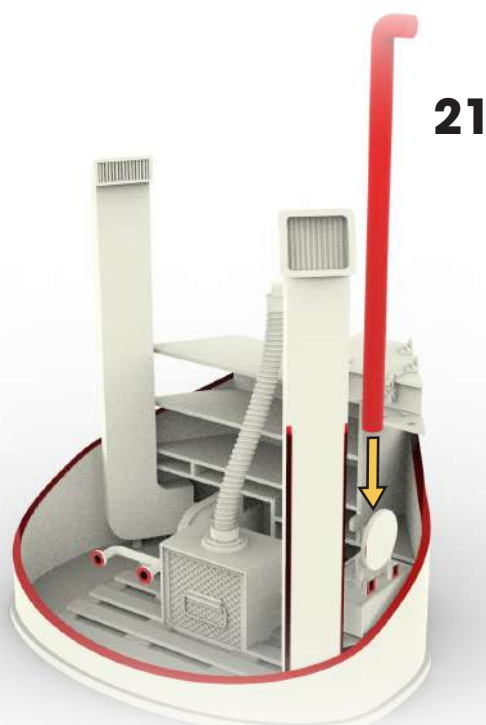
Glue the seat. You can choose the seat position (open “down” / close “up”)

Step 15



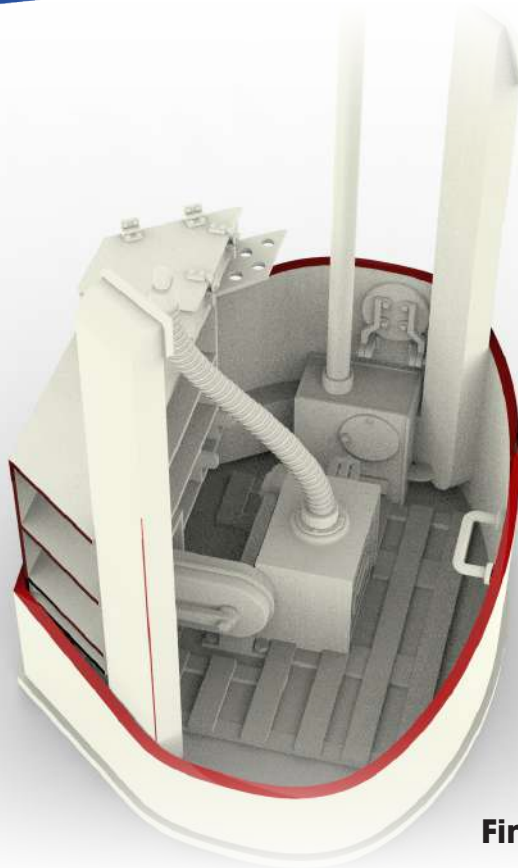
Glue corrugated tube (make attention that fit with part n° 20)

Step 16



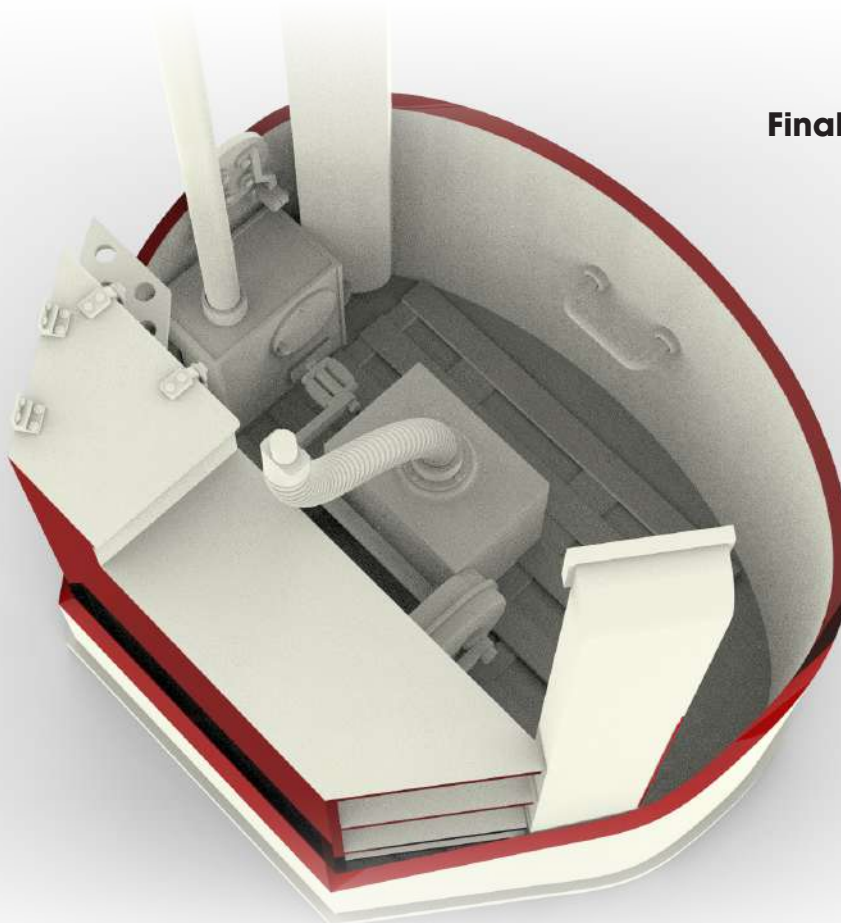
Glue right round pipe over part n° 14 (filter)

Step 17



Final overview

Step 18



Final overview

Step 19



Final overview

Step 20



22

Step 21

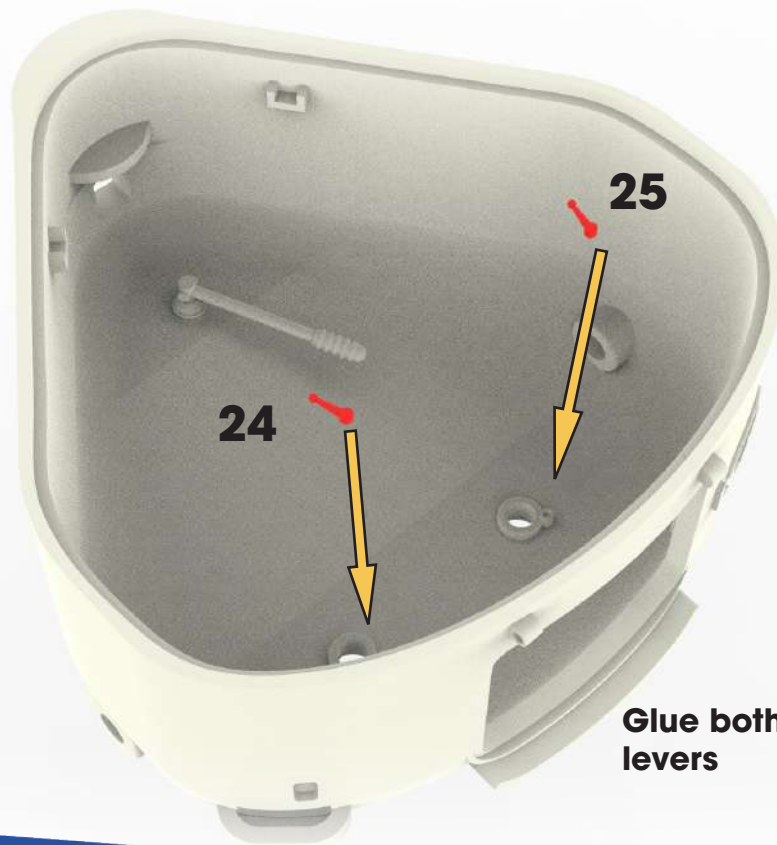


Remember to glue the
MG hatch lever in the
opposite side of the
MG Hatch (part n°32)



Glue MG hatch lever

Step 22



Glue both periscope hatch
levers

Step 23



Step 24

Apply decal on the plate, then glue the plate.



Overview upper hull

Step 25



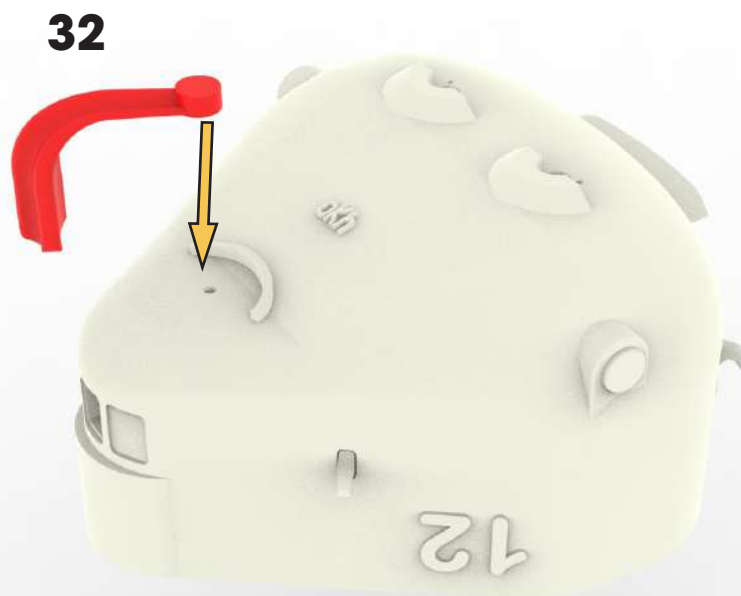
Glue four hooks at hupper hull

Step 26



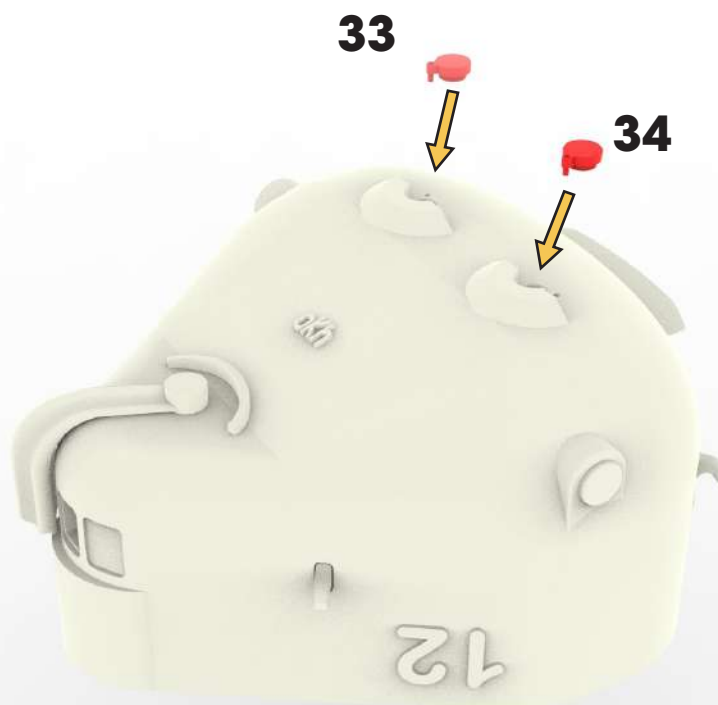
Glue left cap

Step 27



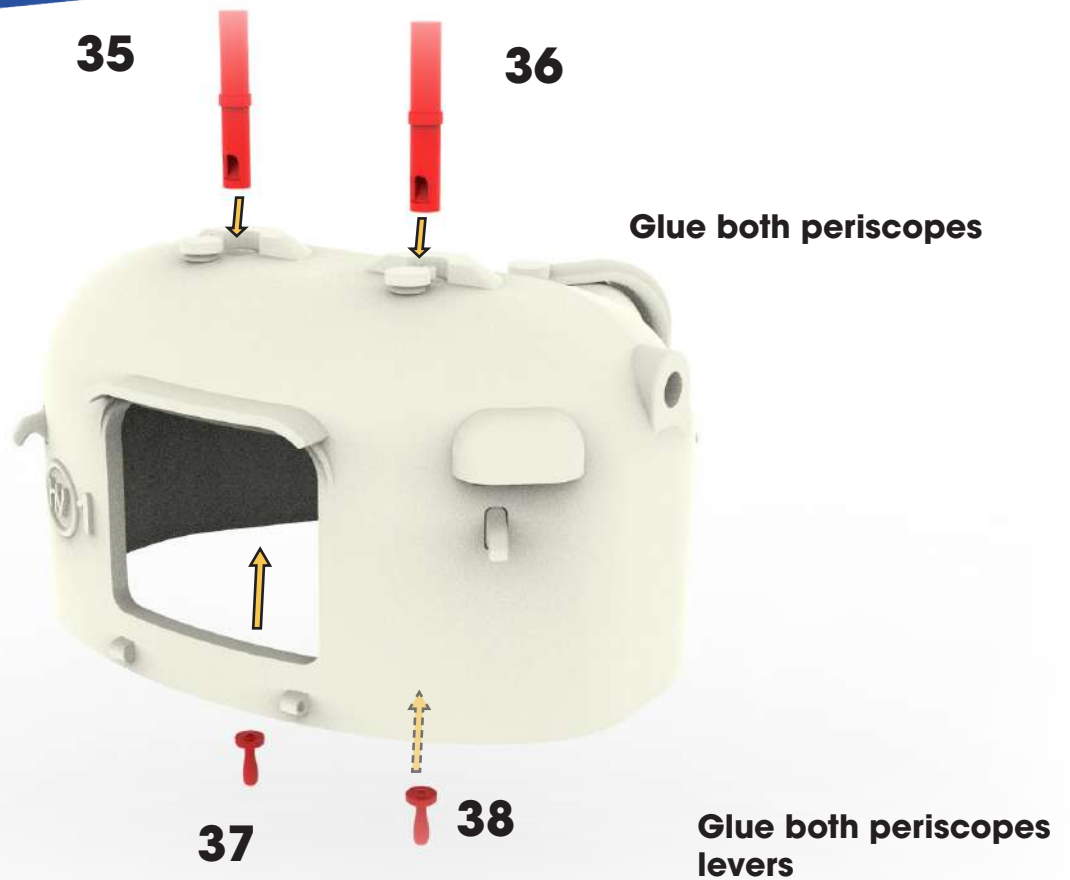
Glue MG hatch

Step 28

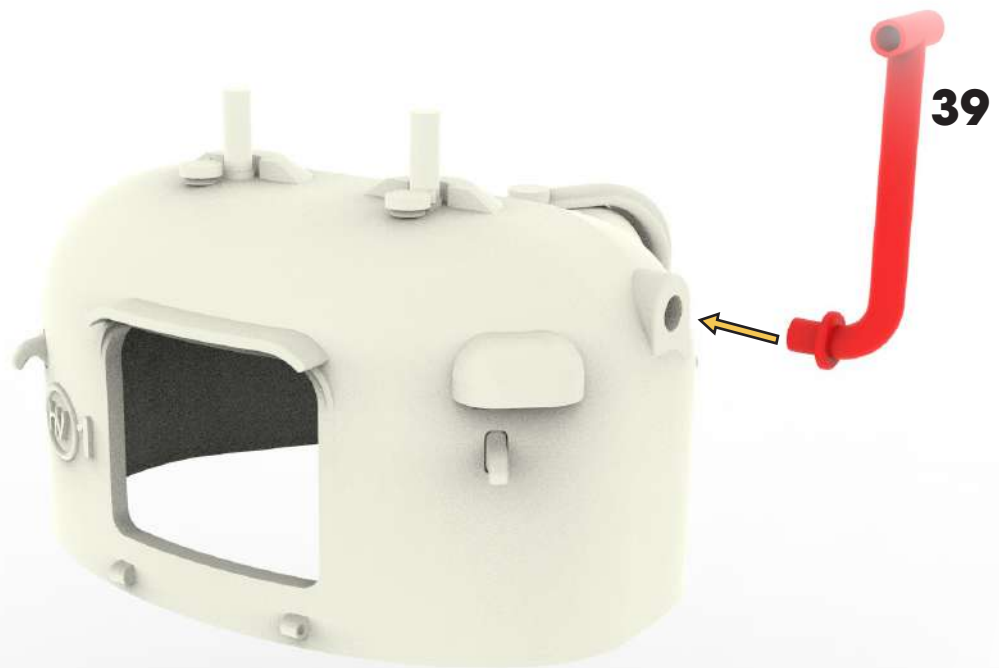


Glue periscopes caps

Step 29



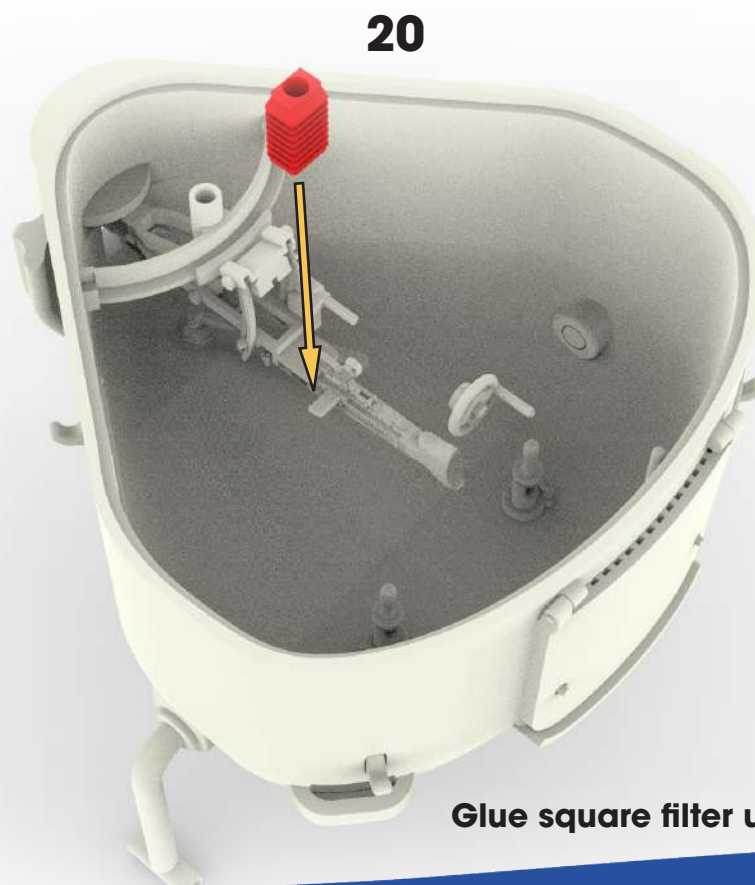
Step 30



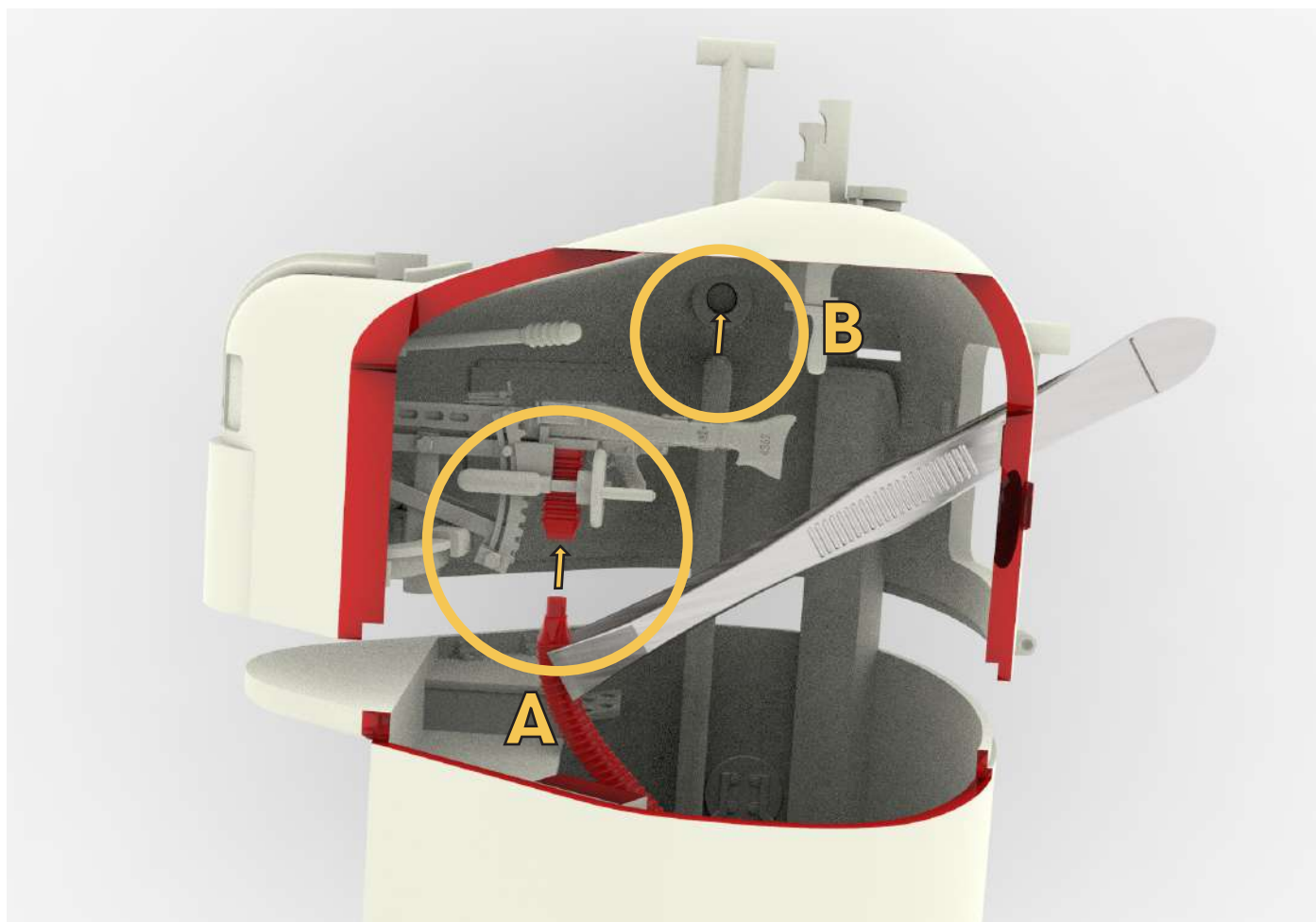
Step 31



Step 32



Step 33

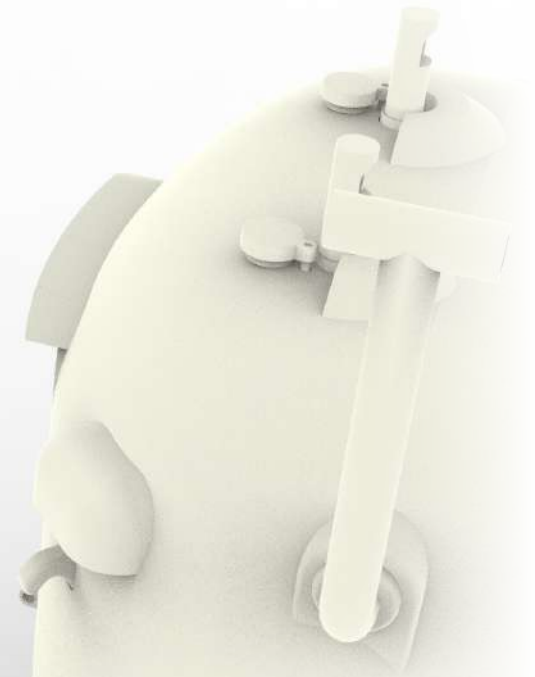
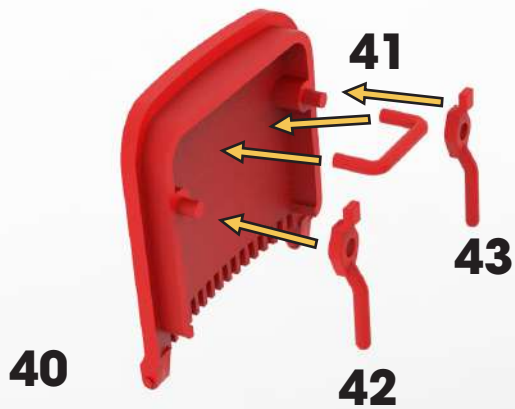


CLOSE THE HULLS

A) After the hulls closed, act from the opening hatch to connect the corrugated tube under the square filter

B) Act from the opening hatch to connect the right round pipe

Step 34



Glue the two closing levers and the handle to the hatch and finally glue the hatch in open position





